

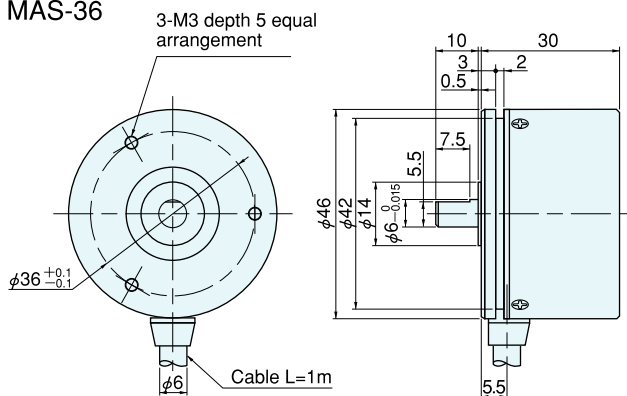
MA-36 series

[Absolute]

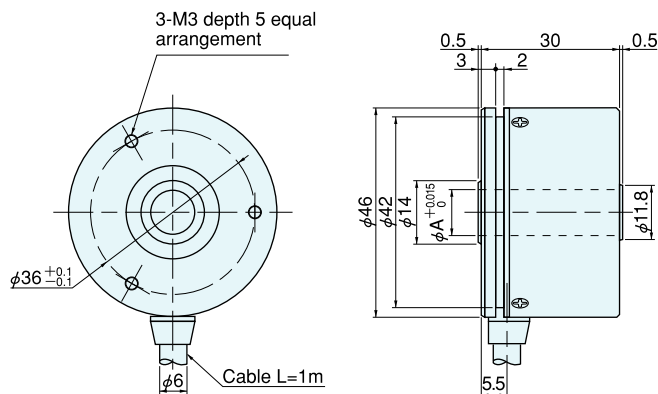


Outside dimensions

MAS-36

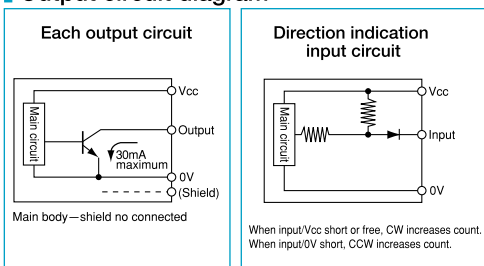


MAH-36



$\phi A = \phi 7$
 $= \phi 8$
 $= \phi 10$

Output circuit diagram



Specifications

Type name		MA□-36-□□□□
Item		Shaft shape Output code Supply voltage ●S=single shaft ●G=gray code ●3=DC5~12V ●H=hollow shaft ●N=pure binary code ●4=DC24V
Supply voltage		3:DC+5~12V±10% 4:DC24V±10%
Current consumption		70mA or less (under no load)
Output code		G:gray code N:pure binary code
Logic		Negative logic (H=0, L=1)
Resolution		256, 360, 512, 720, 1024
Output circuit		NPN open collector
Output capacity		Sink current each bit 30mA
Allowable load of shaft (electrical)	Radial	19.6N (2kgf)
	Thrust	9.8N (1kgf)
Maximum revolutions		6000r/min
Maximum response frequency		10kHz
Starting torque		$5 \times 10^{-3} \text{N} \cdot \text{m}$ (50gf·cm) or less (no oil seal)
Working temperature/humidity		0°C~60°C/RH35%~90% no dewing
Storage temperature		-20°C~80°C
Vibration resistance		Durability 55Hz, double amplitude 1.5mm 2 hours each in X, Y, and Z directions
Impact resistance		Durability 500m/s ² (about 50G) 3 times each in X, Y, and Z directions
Cable		Outside diameter $\phi 6.0$ 16-core vinyl wire Insulated shield cable (length 1m)
Mass		180g

Connection

Type	Output signal	
	MA36P-G	MA36P-N
cable color		
Brown	2 ⁰	2 ⁰
Brown/black	2 ¹	2 ¹
Orange	2 ²	2 ²
Orange/black	2 ³	2 ³
Yellow	2 ⁴	2 ⁴
Yellow/black	2 ⁵	2 ⁵
Green	2 ⁶	2 ⁶
Green/black	2 ⁷	2 ⁷
Blue	2 ⁸	2 ⁸
Blue/black	2 ⁹	2 ⁹
Purple	NC	NC
Purple/black	NC	NC
Red/black	NC	Rotating direction indication input
Red		Power
Black		0V (COMMON)
Black		0V (COMMON)

Note: The shield is in the encoder and not connected. A capacitor (0.1mF) is connected between 0V and FG.

Resolution and code No.

Resolution	Code No.
256	0~255
360	76~435
512	0~511
720	152~871
1024	0~1023